

Erection of a warehouse and an administration building with exhibition space

Client: Zukunft GmbH

Costumer: Zukunft GmbH

The client, a company for machine building and trading, needed a warehouse for storage and handling activities as well as a representative part in the building to use for offices and exhibitions.

The two-bayed warehouse is equipped with two 20 tonnes overhead travelling cranes to be able to move the partially very heavy machines.

The construction costs were estimated to about 3.7 m Euros.

Our performances:

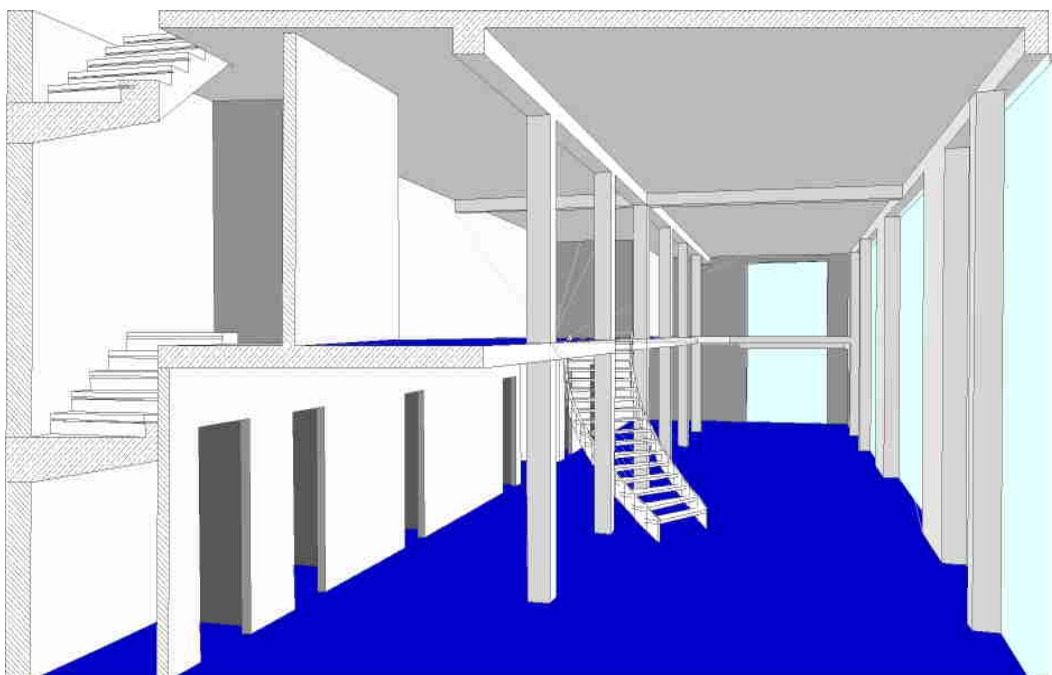
- **Preliminary design**
- **Issue a development concept**
- **Design development, visualization in 3D**
- **Managing application process for building permit**
- **Static calculations**
- **Construction drawings**
- **Detailed and approved final design**
- **Tendering process**
- **Allocation of contracts**
- **Construction supervision**
- **Accounting control**



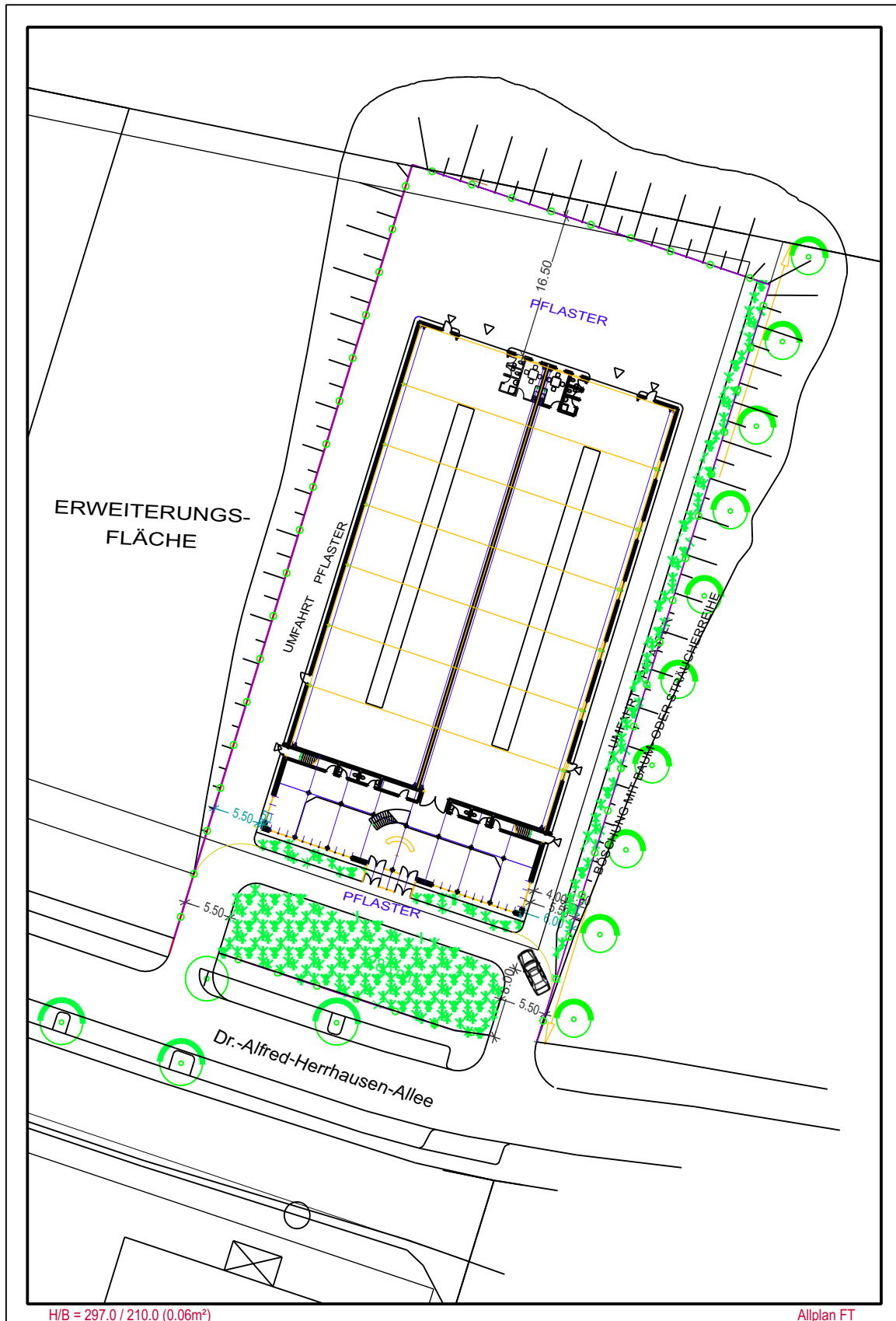
street view of the design



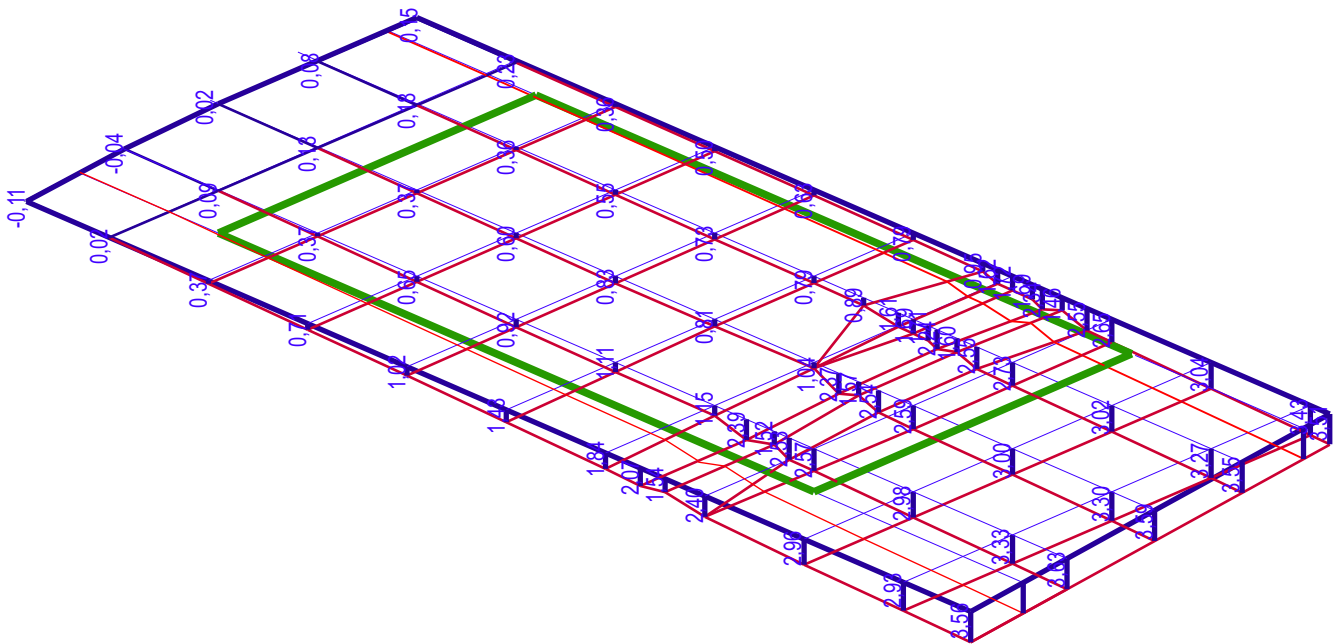
during construction



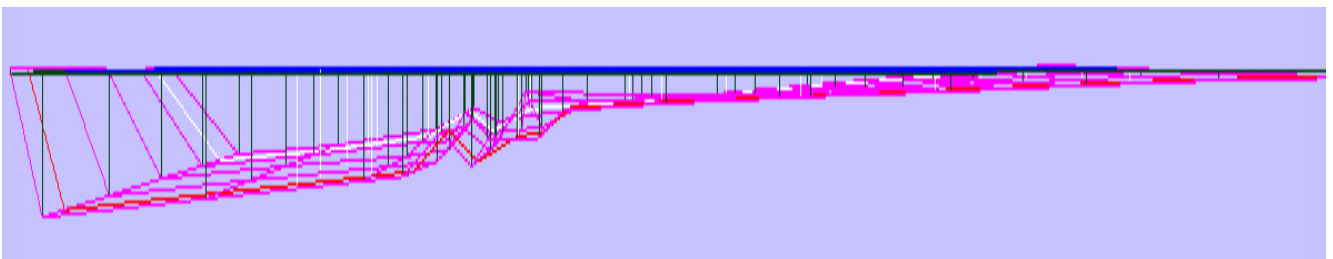
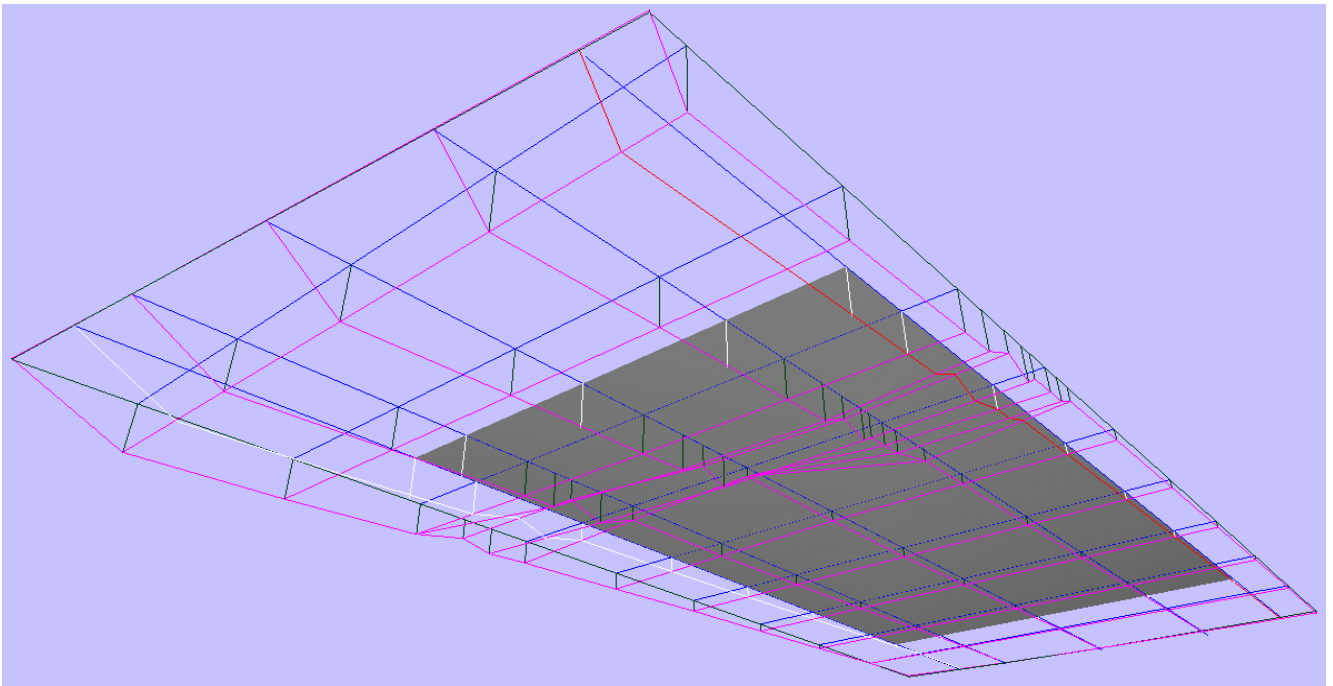
interior views foyer



development and green concept



3D- ground model for determining the necessary earth movement



spatial representation of the base plate bottom edge and the top ground surface