

Extension of the logistics centre (CP 2)

Client: Kuehne + Nagel (AG + Co.) KG

Customer: Walter Hellmich GmbH

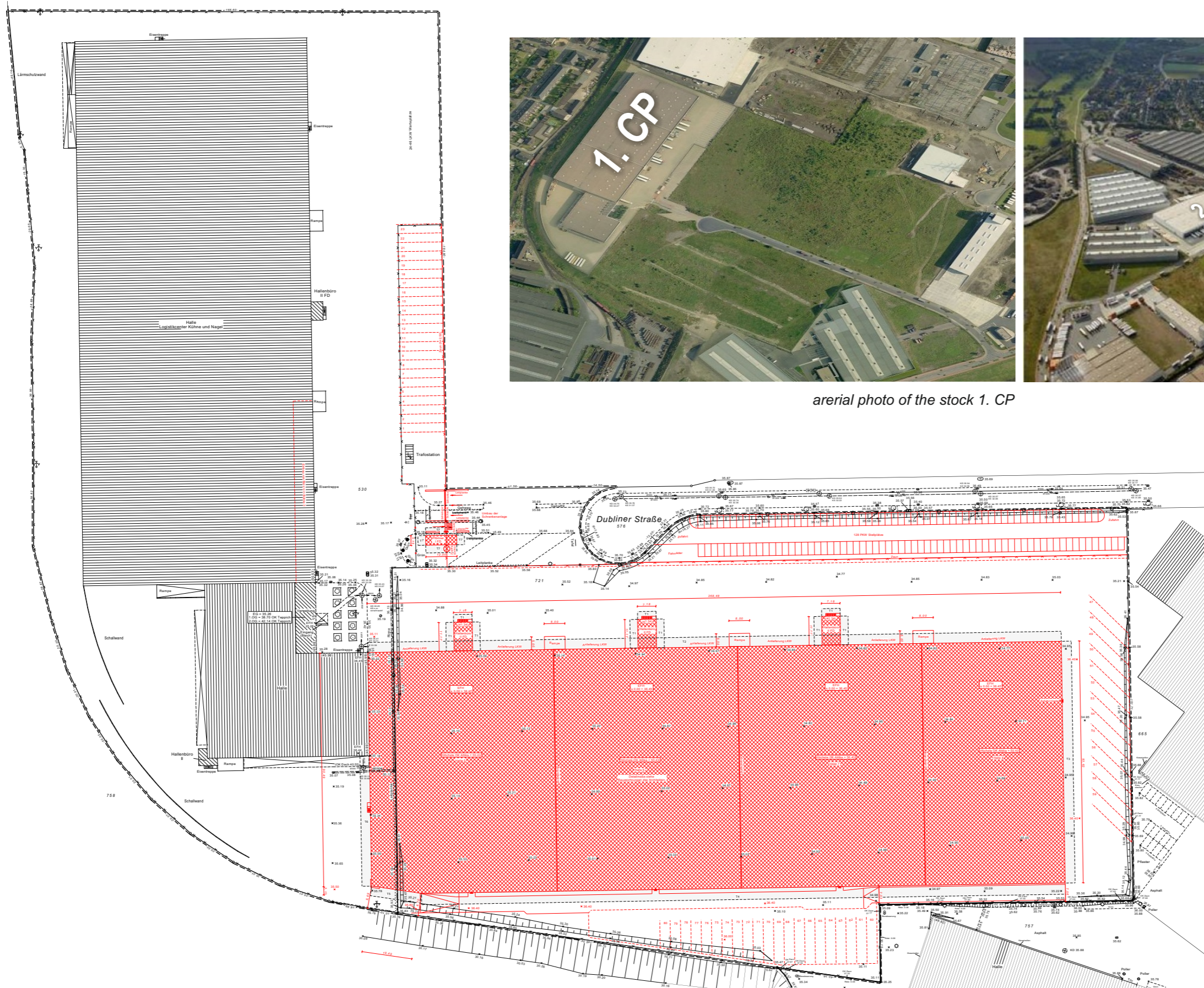
On the Duisburg "Logport" area in 2007 the already existing logistics centre was expanded by four more logistics warehouses. Also the extension included office and social areas and 42 truck loading bridges. The logistics warehouses were equipped with the DIS - storage system. The base plates are designed for extinguishing water retention. In front of the warehouses three two-storey office buildings were built. The plot area is about 44,100m², the gross floor area 25,400m² and the gross volume 347,000m³. The production costs add up to approximately 16 m Euros.

Our performances:

- **Detailed and approved final design**
- **Co-ordinating the professionals for:**
 - Building services**
 - Sprinkler technology**
 - Outdoor facilities**
 - Building physics**
- **Co-ordination of the precast concrete unit concept**
- **Static calculations for steel and cast-in-place concrete components**
- **Steel construction drawings**
- **Formwork and reinforcement drawings**



ingate, warehouses

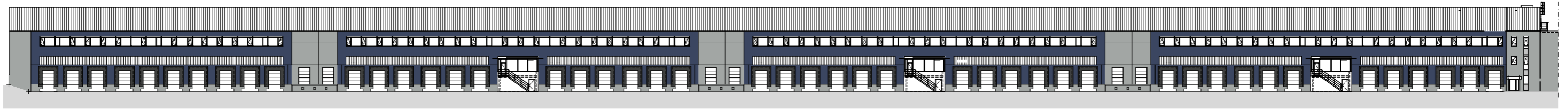


areial photo of the stock 1. CP

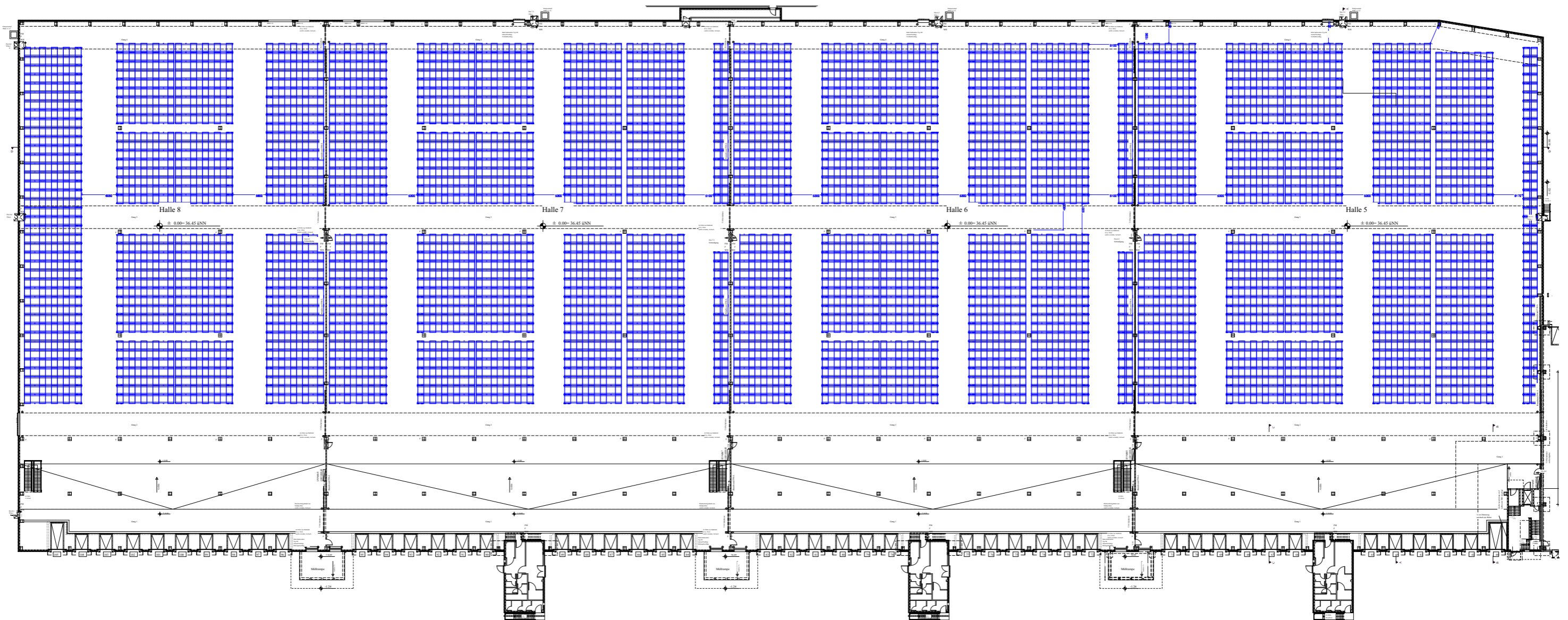


aerial photo 2. CP

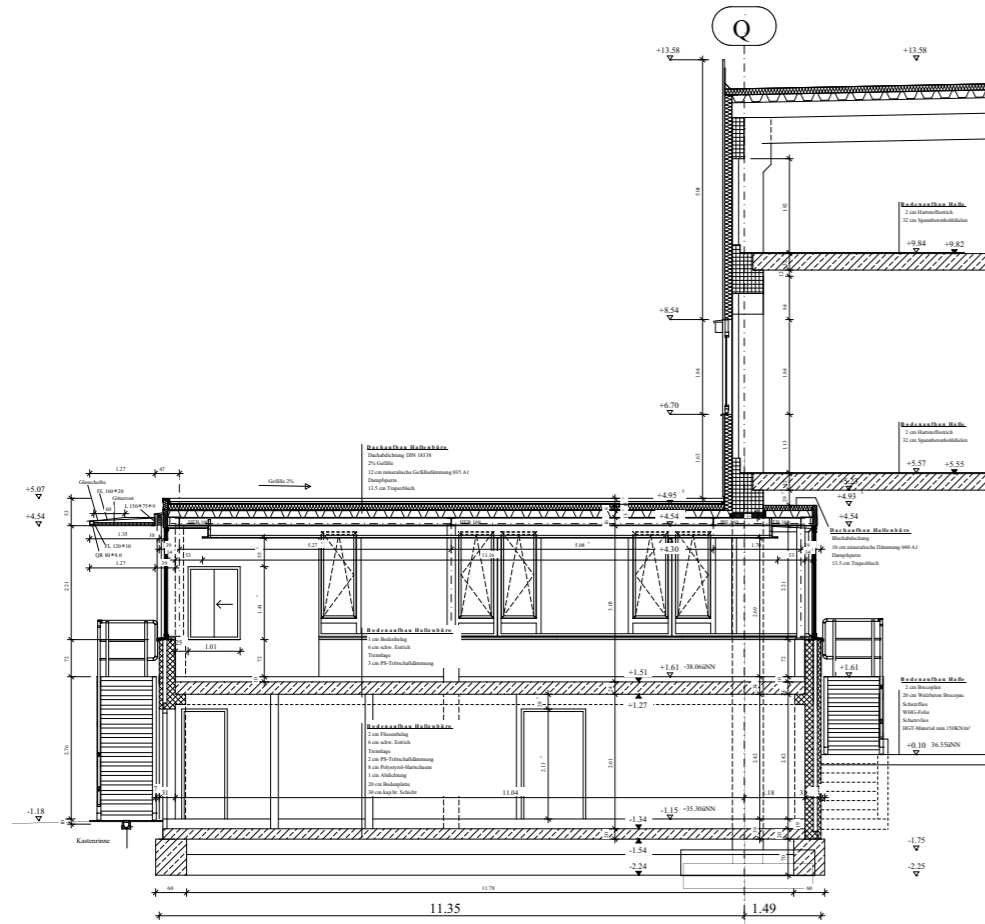
layout



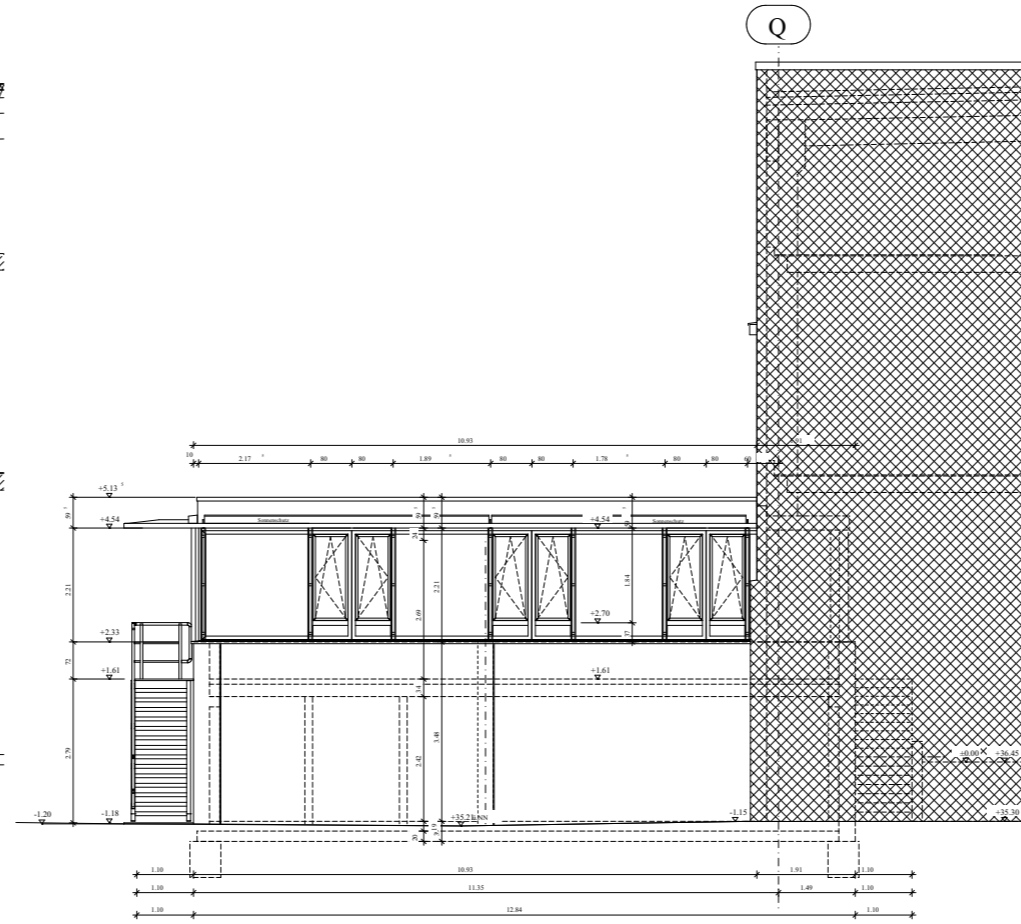
elevation loading area



layout warehouses 5-8



warehouse office 5 section



warehouse office 5 side view



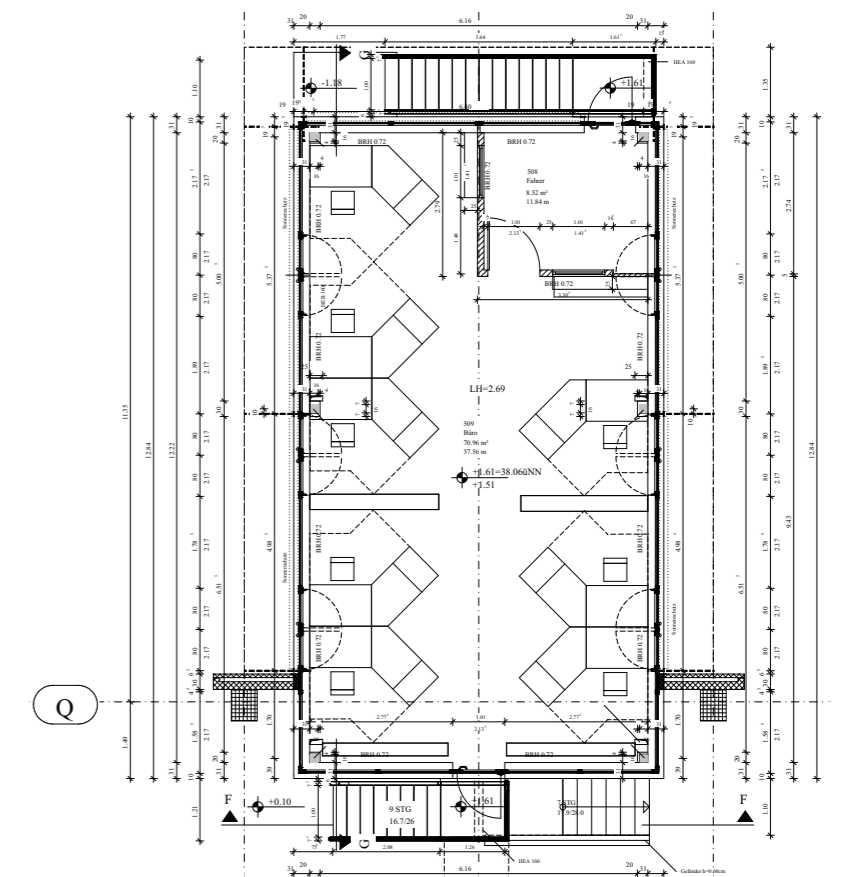
warehouse office 5 elevation



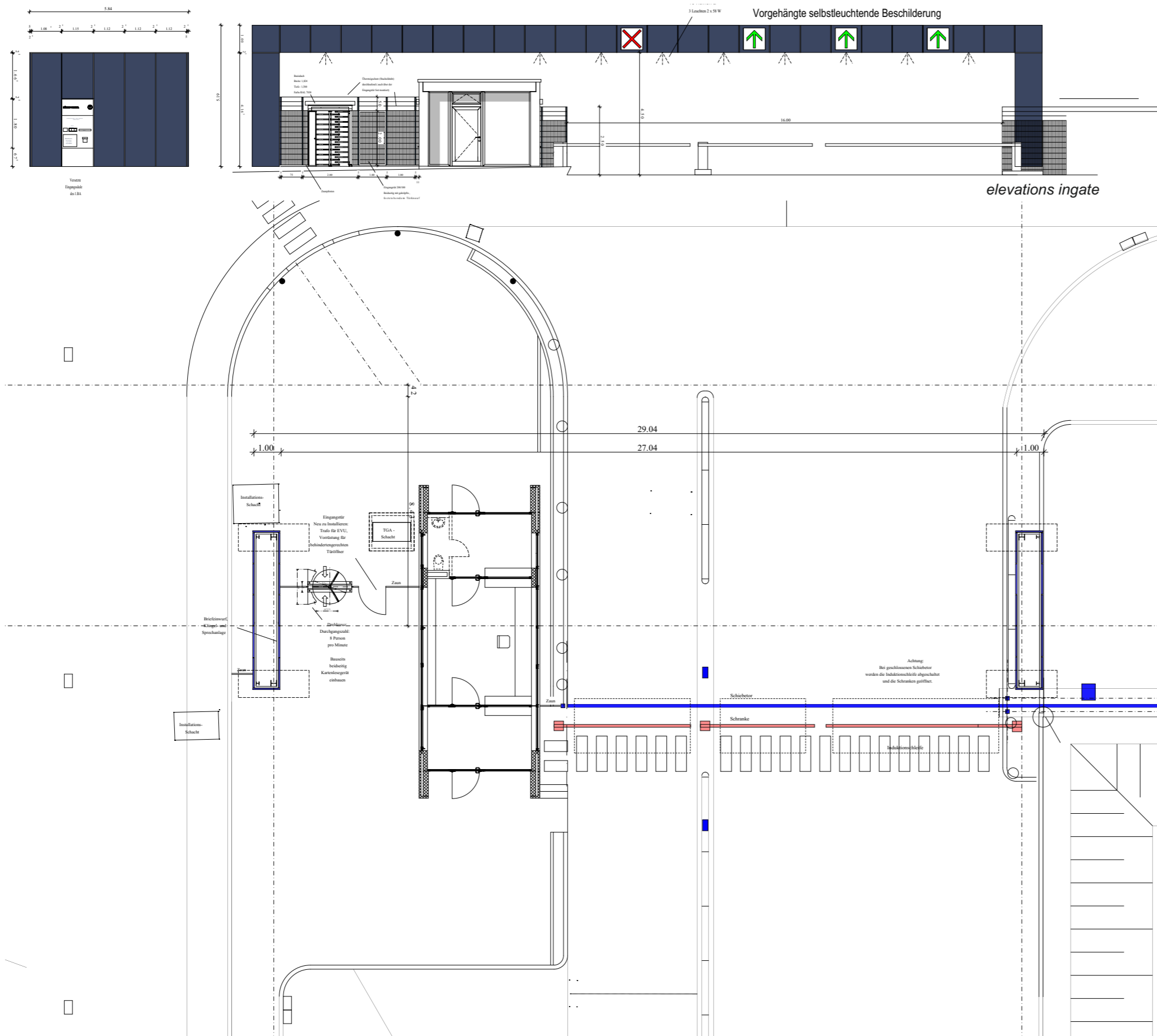
warehouse office 5



warehouse office 5



warehouse office 5 layout

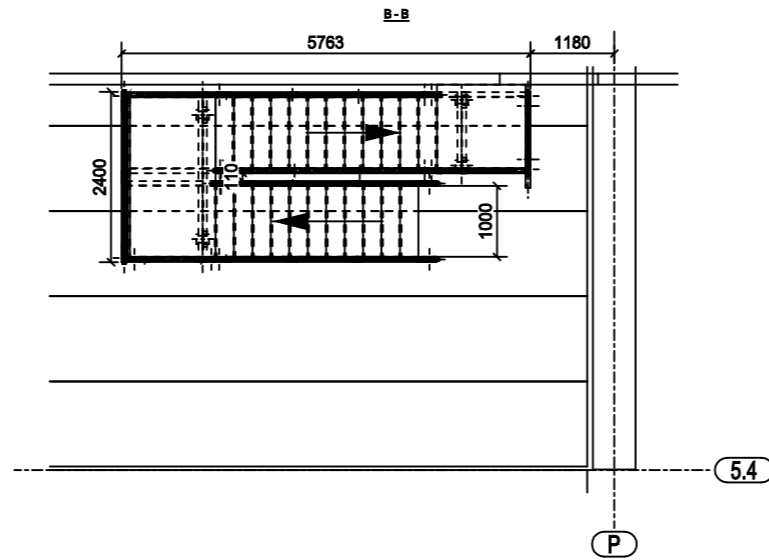
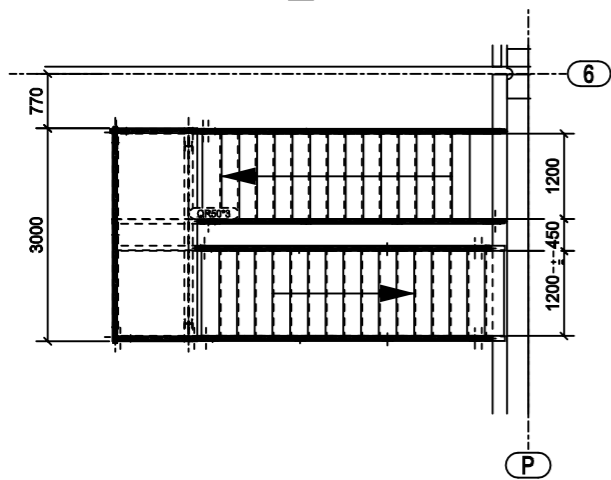
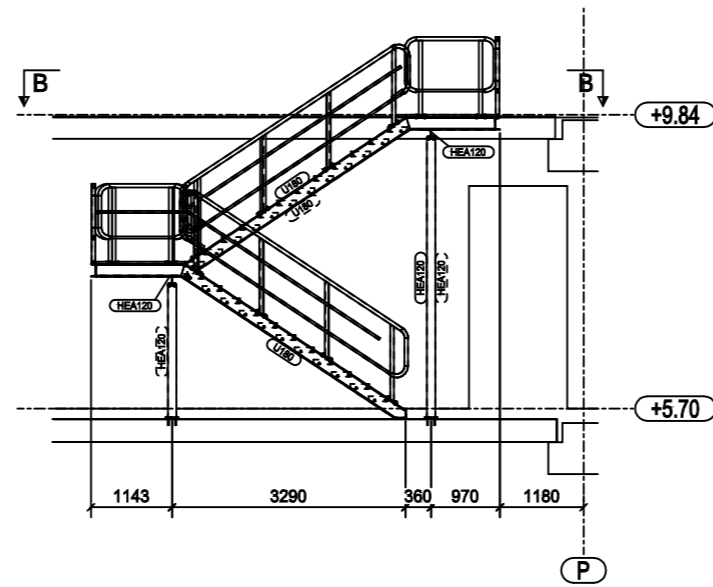
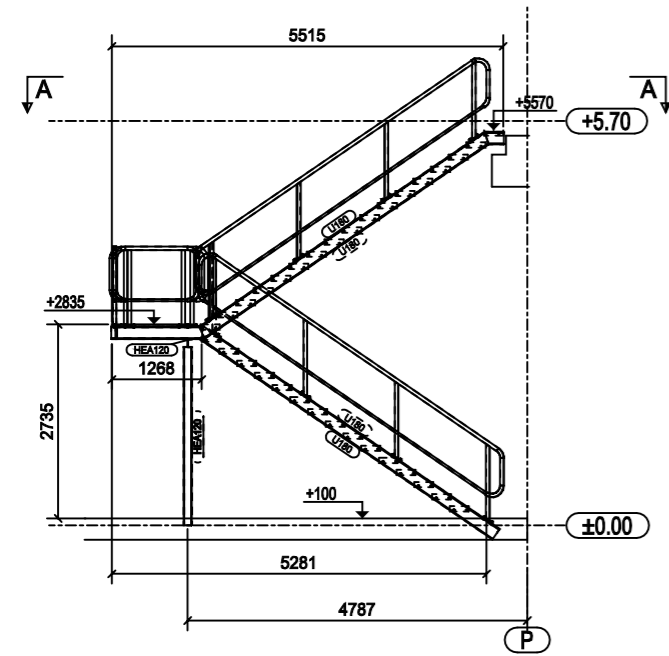


elevations ingate

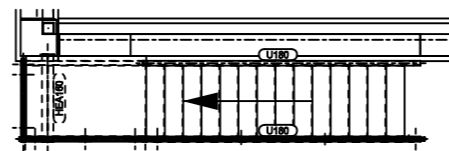
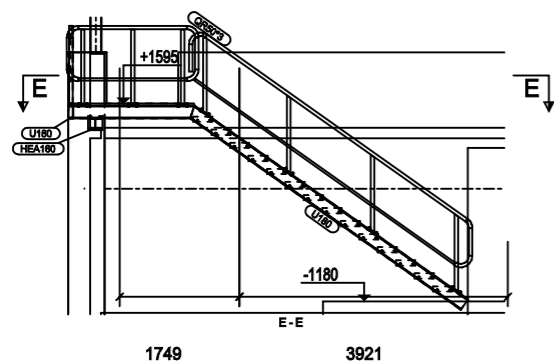
layout drawing ingate



photos ingate



inside staircase warehouse office



steel construction overview inside staircase warehouse office

steel construction overview outside staircase warehouse office



outside staircase warehouse office