

## **Addition of storeys and expansion of an administration building incl. overbuilding a truck thoroughfare**

**Client: Arnold Dammers GmbH & Co. GbRmbH**

**Costumer: Arnold Dammers GmbH & Co. GbRmbH**

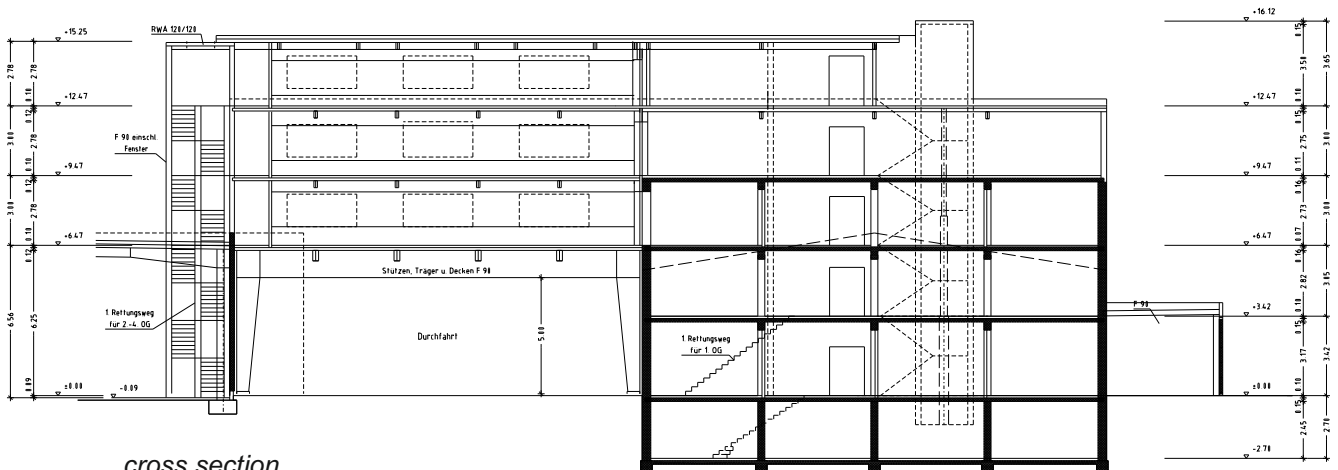
In a three storey administration building the office space had to be doubled. The already existing building could only be extended by one storey because of the static analysis. Therefore a filigree steel structure was used. Because of the small space available it was necessary to build three more storeys over the truck thoroughfare next to the office building. This part was built with a steel construction also.

### **Our performances:**

- **Preliminary design, feasibility studies**
- **Design development, visualization**
- **Managing application process for building permit**
- **Static calculations**
- **Construction drawings**
- **Detailed and approved final design**
- **Tendering process**
- **Allocation of contracts**
- **Construction supervision**
- **Accounting control, acceptance**



*design elevation*



*cross section*



*elevation during construction phase*