

Upgrade of the CHP Wuppertal-Barmen

Client: WSW Wuppertaler Stadtwerke AG

Costumer: DSD Industrieanlagen GmbH

The CHP (combined heat and power station) was modified in the area around a former coal boiler. Therefore two gas turbines for electric power generation with heat recovery were installed. The load-bearing structure could widely be obtained but in some areas severe building alterations were necessary. The two kettles for the heat recovery have chimneys that are 60m high. Kettles and chimneys were placed in / or on a new building in front of the existing building. The construction costs add up to approximately 4.3 m Euros.

Our performances:

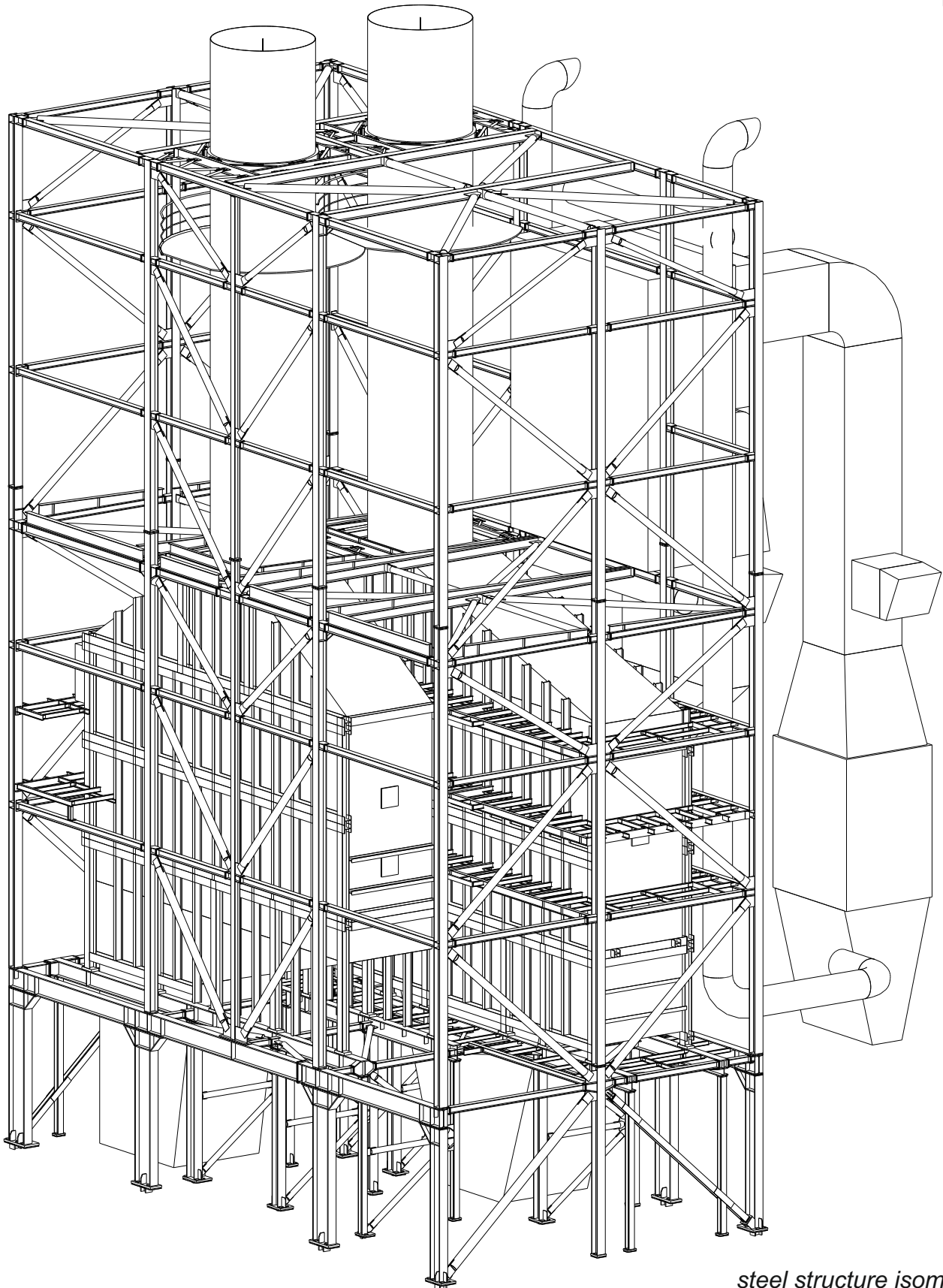
- **Preliminary design and co-ordination with the plant designer**
- **Managing application process for building permit**
- **Static calculations**
- **Formwork and reinforcement drawings**
- **Steel construction workshop drawings**
- **Tendering process**
- **Allocation of process**
- **Construction supervision**
- **Accounting control**
- **Photo animation, construction sign**



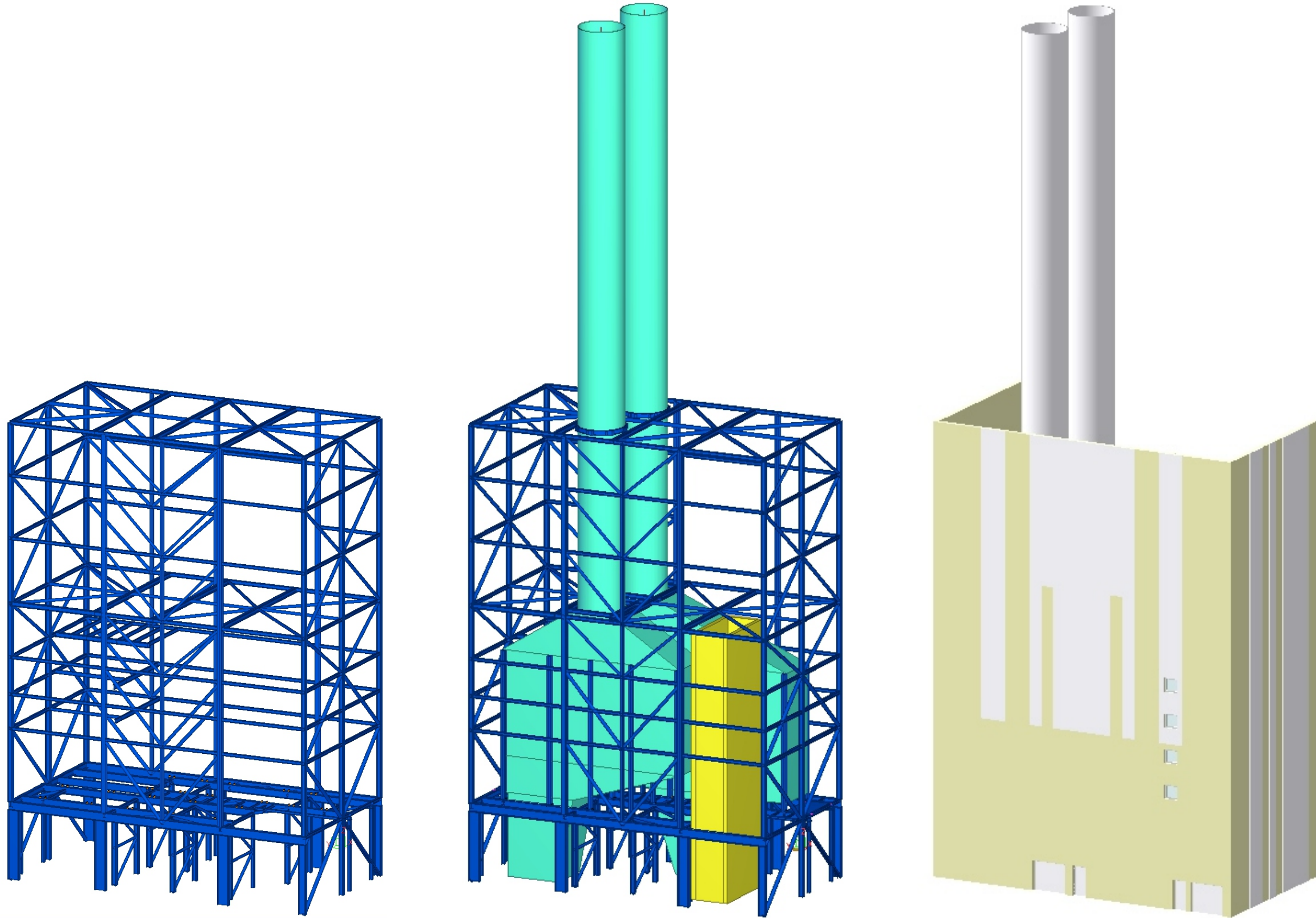
aerial view



computersimulation

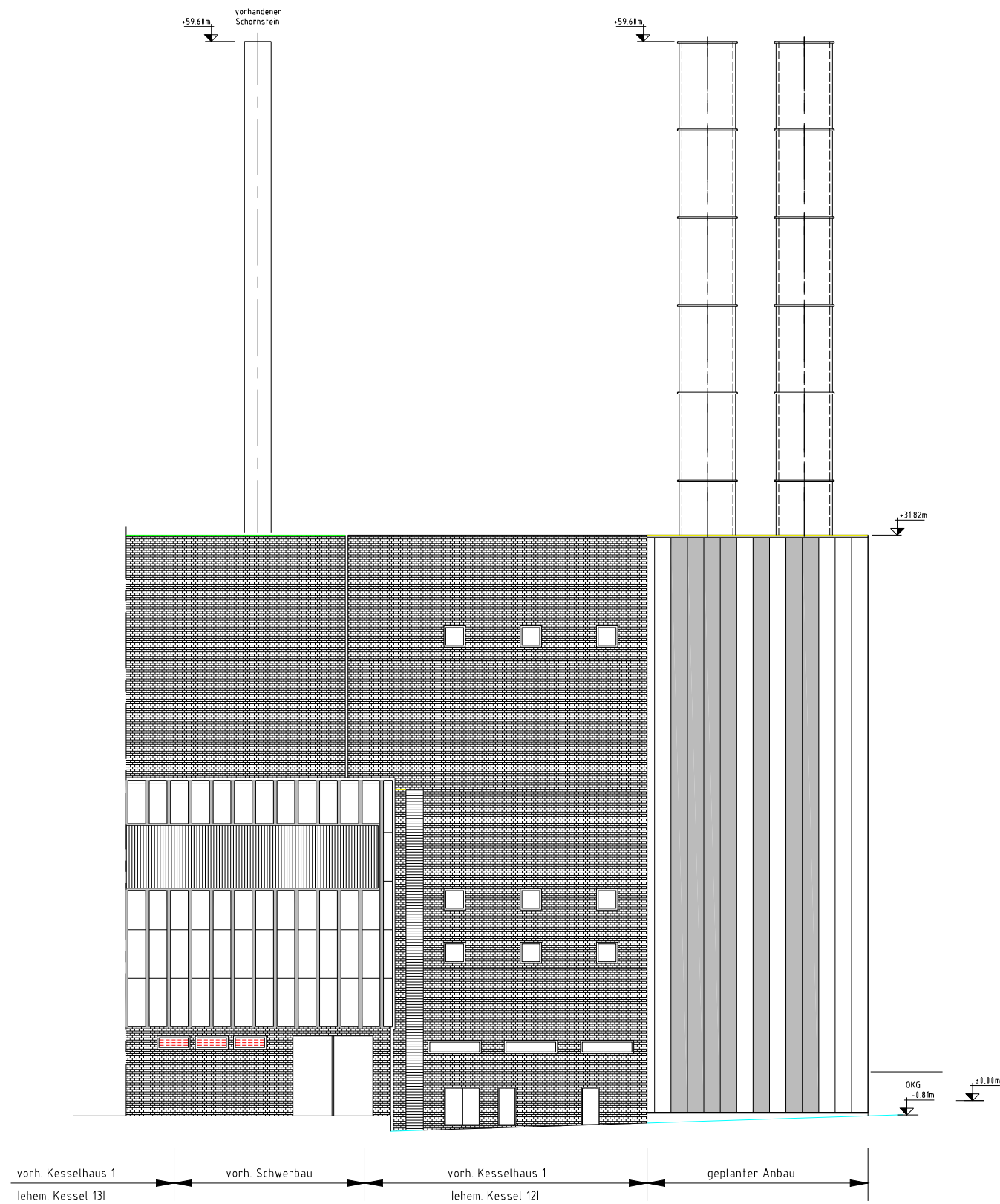


*steel structure isometry
with the implemented plant*

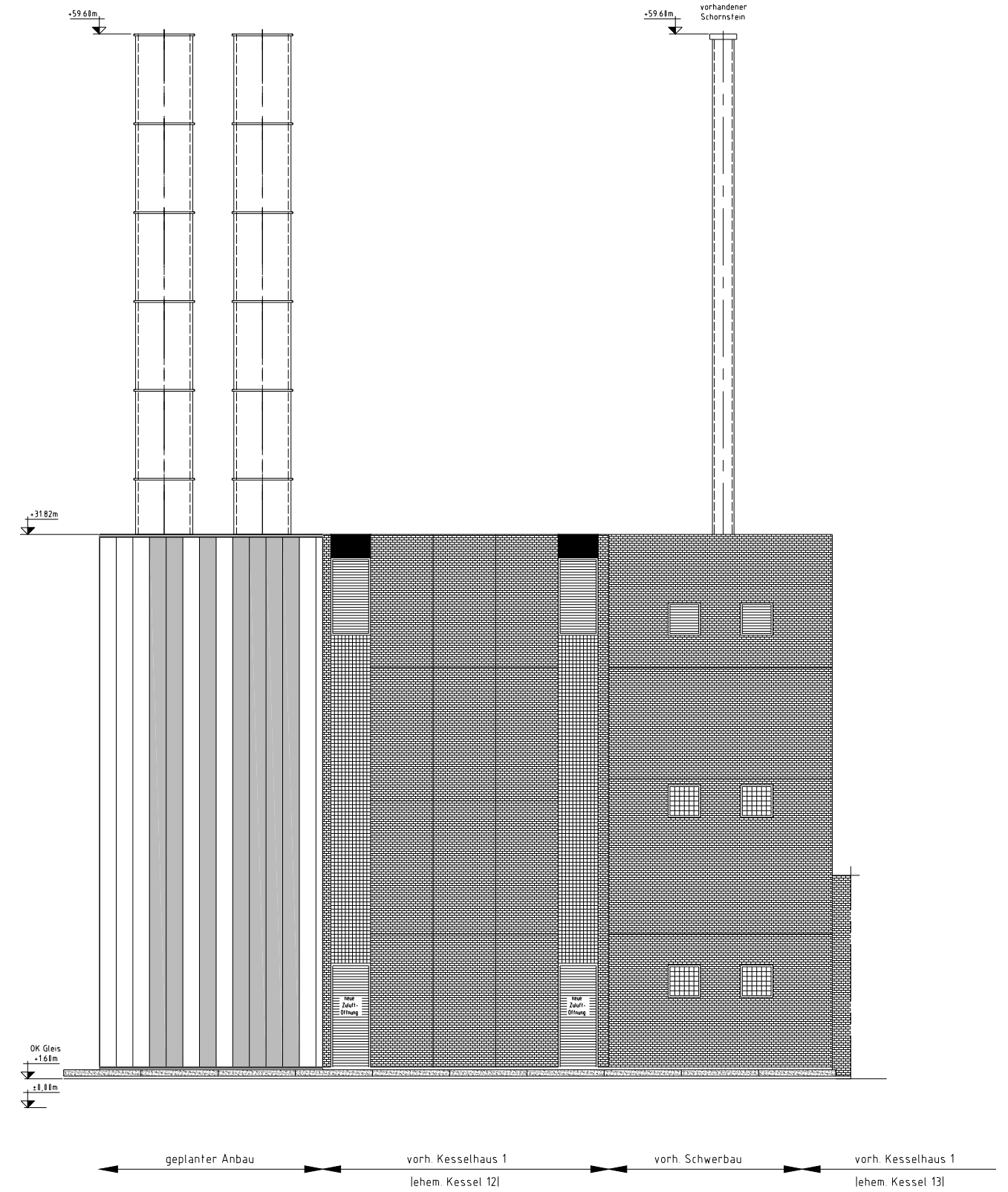


rendered 3D models of the steel structure with plant details, 3D model facade

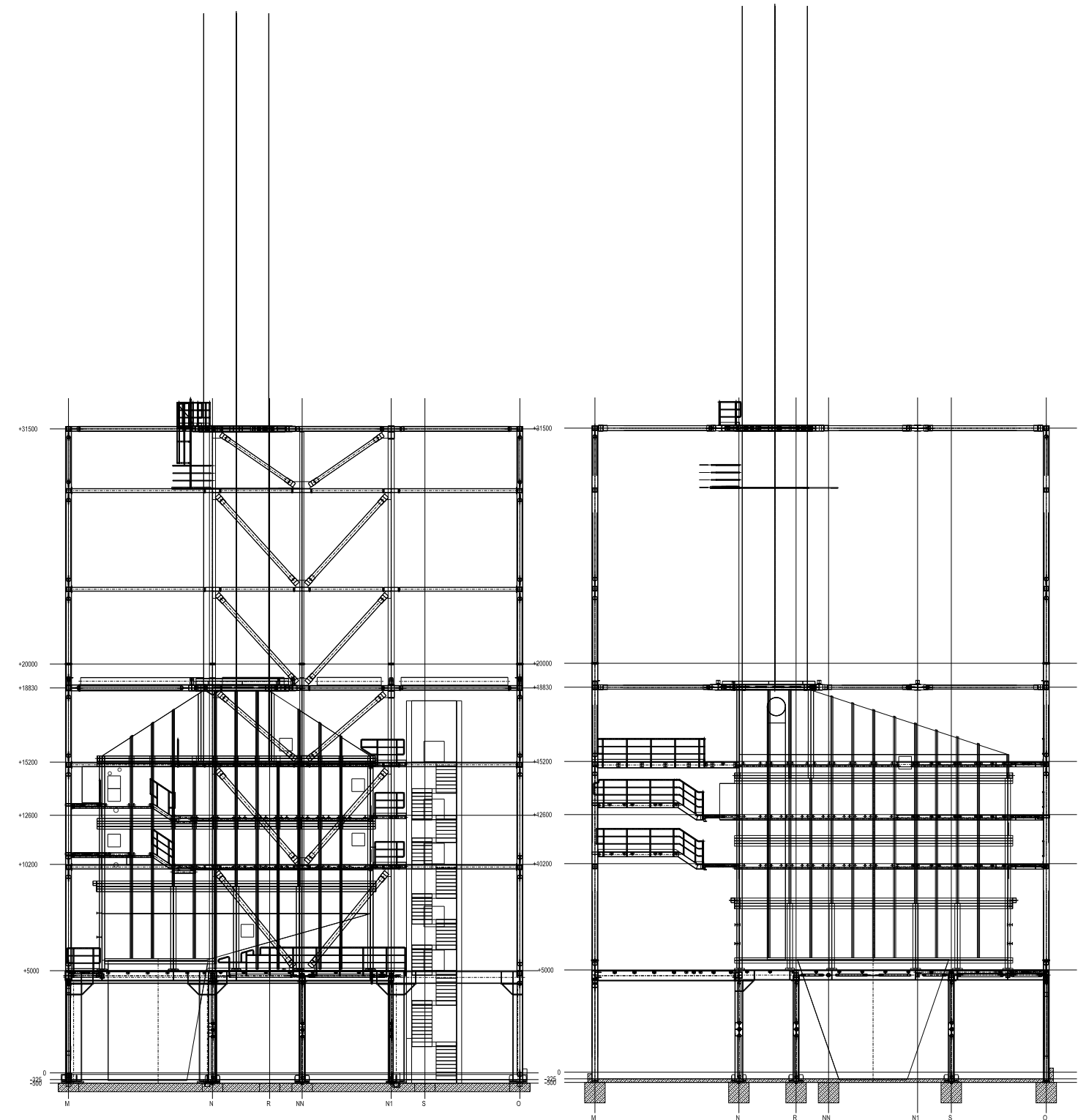
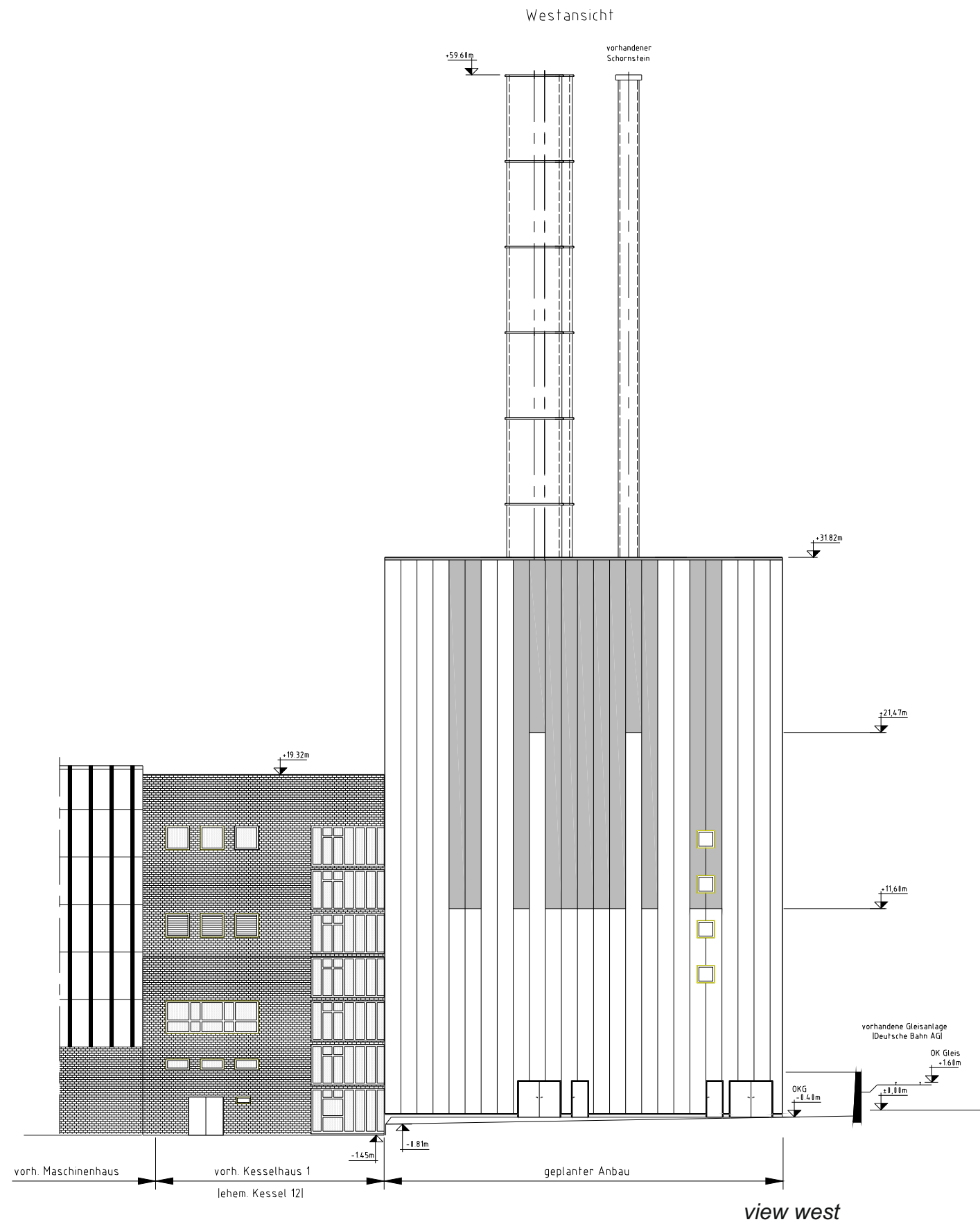
view north



view south



elevations north and south



sections of the CHP